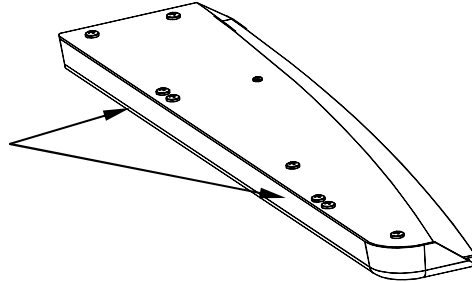


# Half and Split Phantom Mounting

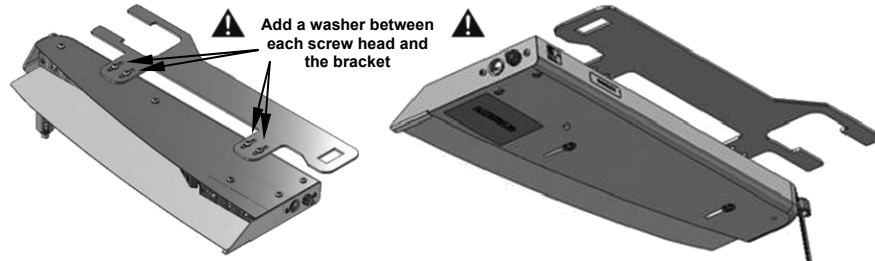
## Top Mounted Vehicle-Specific Brackets

We have designed a number of brackets for the Half and Split Phantom light that fit specific vehicles. This instruction sheet applies to those that mount directly to the top of the light.

1. Remove the two pairs of screws from each light half as shown to the right.



2. Place your bracket over the holes as pictured below and re-install the screws using the enclosed #8 washers (P30073-4) between the head of the screw and the bracket. Do this for both halves of the light, ensuring the brackets are mounted with the forks towards the outer edge of the light.



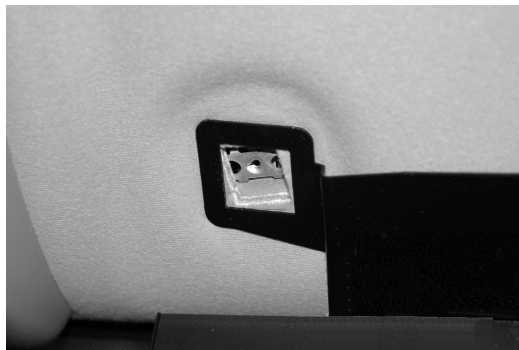
3. Remove both the driver and passenger visor clips from the vehicle.



4. Loosen (**LOOSEN, DO NOT REMOVE!!**) the three visor pivot arm screws on one side of the vehicle with appropriate screwdriver. (*Passenger's side shown*)



5. Slide the forked end of the visor bracket under the visor pivot arm that you just loosened.  
(Passenger's side shown)



6. Align the square hole on the other end of the visor bracket with the visor clip hole.  
(Passenger's side shown)

7. Replace and tighten visor clip to secure the visor bracket to your vehicle. (Passenger's side shown)



8. Tighten the screws on the visor arm to hold the visor bracket and light in place.  
(Passenger's side shown)

**Note:** Light not shown in this picture for clarity.